



early edition

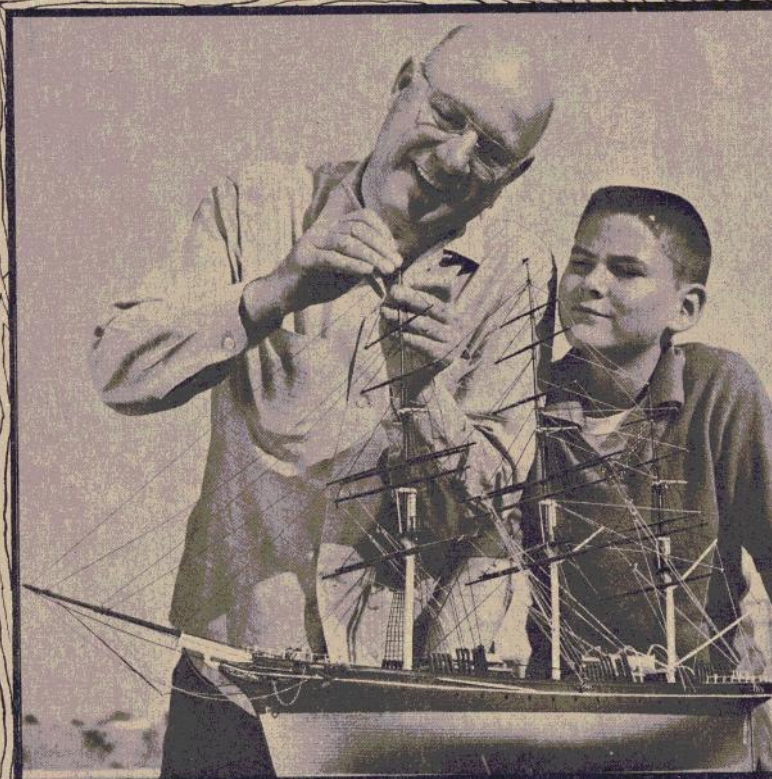
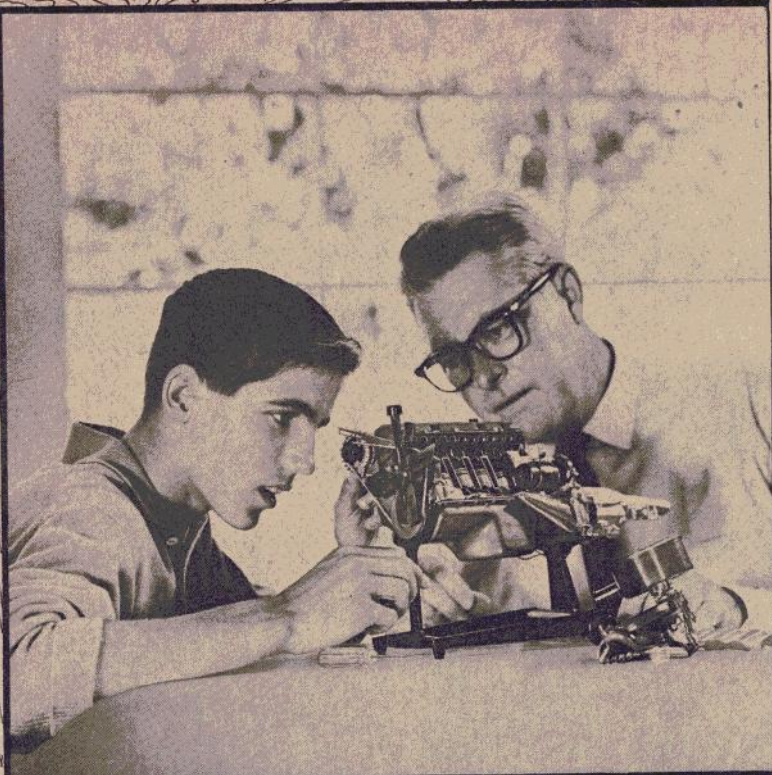
1962

*MODEL KITS
For Everyone*

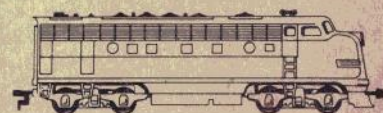
**IT'S REAL BECAUSE
IT'S REVELL**

15c

COPYRIGHT © 1961 BY REVELL, INC. K-61-173 PRINTED IN U.S.A.



H-O TRAINS AND ACCESSORIES



H-O ELECTRIC TRAIN RAILROADING

Home electric trains became popular in the early 1900's. Called "tinplate" because the rails were tin-plated steel, the size of these trains was measured by the gauge, or distance between the inside edges of the track. When real trains were short and stubby, tinplate scale models were reasonably authentic. Some cars were as long as a foot, but back in the days of large roomy houses this was not too inconvenient.

As homes became smaller and the design of real trains became longer and lower "home railroaders" began asking for smaller gauge trains which would be more authentic and convenient.

In the 1930's "O" gauge, 1/48th real train size, and "S" gauge, 1/64th real train size, rapidly replaced the larger tinplate. Now "HO" gauge, half of "O" gauge size, 1/87th the size of real trains, is, in turn, replacing the old type "O" and "S" gauge toy train in the affections of "home" railroaders.

Modern plastic technology makes it possible to produce "HO" gauge trains with extraordinary detail, duplicating every facet of the real train. "HO" trains are so compact that a complete railroad system can be built on a table top.

Today more than fifty percent of all electric trains are in "HO" scale, instead of the old fashioned "O" and "S" gauge, which have given way to modern living conditions and the desire for "real" authenticity by home railroaders.

7 MINIATURE CONVERT-A-CAR KITS IN H-O SCALE TO ASSEMBLE

Revell Authentic Kit

A REAL FUN CHALLENGE!

Chrysler Imperial - Lancer - Dodge Dart - Plymouth Wagon - Dodge Polara - Valiant - Dodge - Chrysler Convertible

Taxi - Mail Car - Phone Co. - Press Car - Tow Truck

Police Car - Fire Chief - Custom Sedan - Sign Painter - City Official

Dairy Delivery - Sports Carrier - Military Command - Custom Convertible

Idea styled by Ed "Big Daddy" Roth and Rod & Custom Magazine

For: Model Railroaders - Car Collectors - Car Customizers

"The word Revell meant nothing to my father when he was a boy, but today the word Revell means a chance to create an exact replica of history—past, present or future. Thanks again for myself and the youth of America."

*... Fred B. Tarter
Brooklyn, New York*

CONVERT-A-CAR KIT

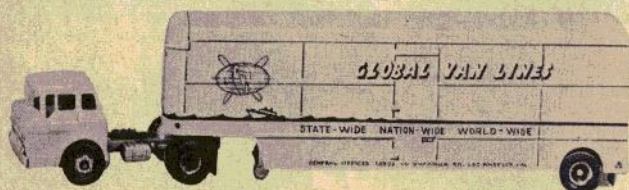
H-O scale. In one exciting set — **seven** miniature cars! Over 75 variations can be created. Stock cars — Customized cars — Collectors cars. A real fun challenge for all model builders, H-O railroaders, and car collectors.

FEATURES: Single piece body construction for rapid assembly.
Seven different body styles of Chrysler Corporation cars.
All in different factory colors.

Kit includes loads of extras: Heavy with chrome — Fins — Discs — Sirens — Ladder — Side pipes — Spot lights — Door spots — etc., etc.

Loaded with decals. Make your own: Taxi — Police Car — Tow Truck — Dairy Delivery Wagon — Fire Chief's Car — etc., etc.

Idea-Styled by Ed "Big Daddy" Roth and Rod & Custom Magazine **T-6019 \$1.98** — for all seven cars!



GLOBAL VAN LINES TRUCK T-6018 98¢

Moving H-O scale furniture? Then do it in your Global Van Line. Cab pivots forward and reveals engine. Hinged doors on trailer which bears official Global Van Line decals. Full furniture load included. Molded in four colors.



FORD AUTO TRANSPORT T-6021 \$1.29

Haul your H-O cars to all points — easy to assemble. Molded in three colors. The cab tilts forward and pivots from the trailer — and tracks function.

IT'S REAL BECAUSE IT'S REVELL

Twice the fun in half the space... can be yours with your Revell H-O gauge model railroad.

Using a minimum of space, your H-O pike can be left assembled for year around enjoyment, or can be placed in a corner, or on small wheels to be rolled out at your fancy.

Revell H-O trains have been exhaustively tested and rated "Excellent," by one of the nation's largest consumer research organizations.

Each Revell train is pulled by a mighty multi-wheeled, gear driven engine, powered with Revell's exclusive rugged POWERFLO 5-pole motor. And for night-running every Revell engine has its own operating headlight.



H-O TRAIN SETS...The Hottest on the Pike!

*All products available in sets, also available as individual items.
Please see individual item listing on page 29.*

SET NO. 1

T-7063—T-7066

T-7065

\$14.95

Complete with bridge, 14 sections oval track, rerailer, 8-wheel, gear-driven POWERFLO Diesel engine, extra long gondola with "lift up load," reefer, caboose. Available with New Haven (T-7063), Santa Fe (T-7066), or Canadian Pacific (T-7065) Engine and caboose.



SET NO. 2

T-7150

\$16.95

Complete with railroad bridge, 14-piece oval of track, with rerailer and terminal section. Pennsylvania Railroad steam engine with 4-wheel engine and POWERFLO motor. Extra-long gondola; cement hopper; flat car and bunk car caboose.

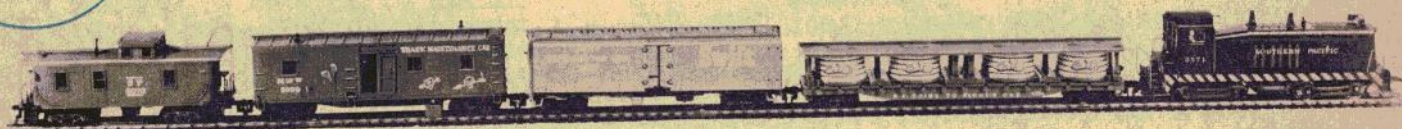


SET NO. 3

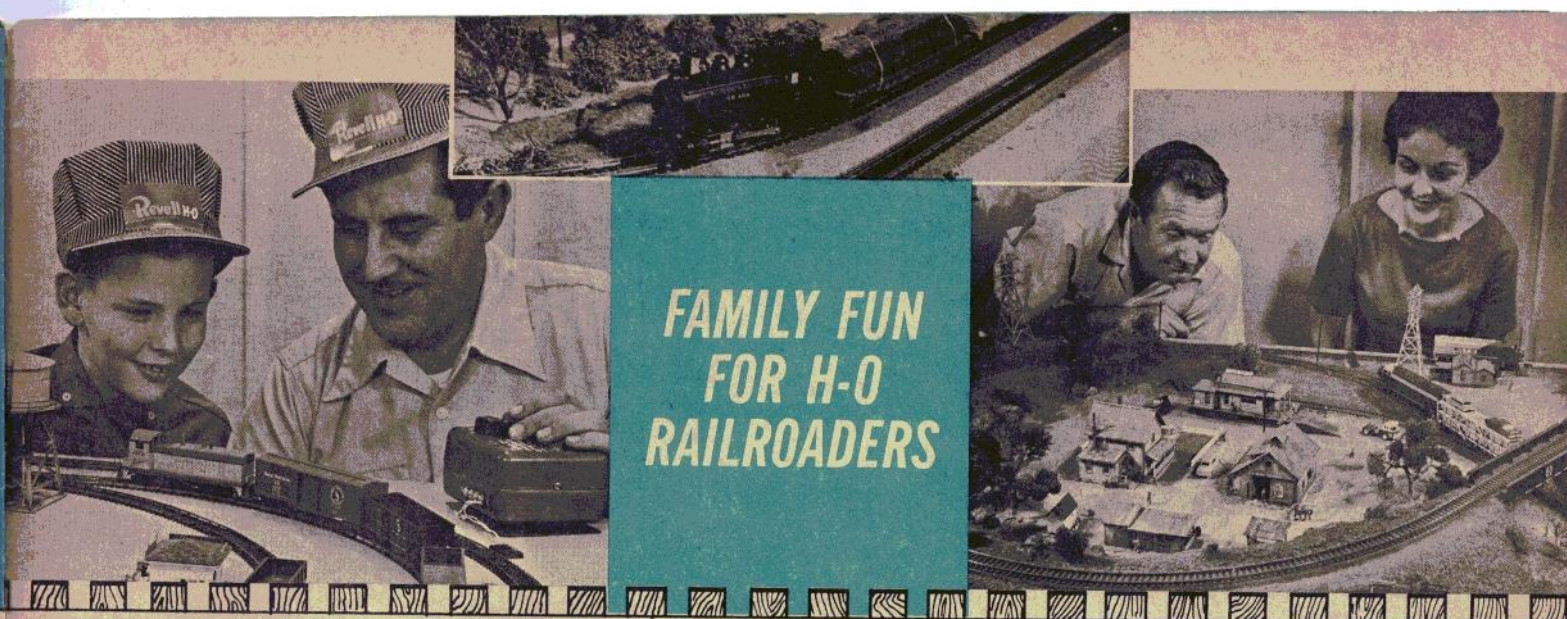
T-7015—T-7016

\$19.95

Authentic down to and including the 8-wheel gear-drive SW7 Switcher engine with rugged POWERFLO motor. Operating track cleaner car, Heinz pickle car, colorful reefer, caboose. 14-piece oval of track, including rerailer, uncoupler, and terminal section. Available with New Haven (T-7015) or Santa Fe (T-7016) Engine and Caboose.



IT'S REAL BECAUSE IT'S REVELL



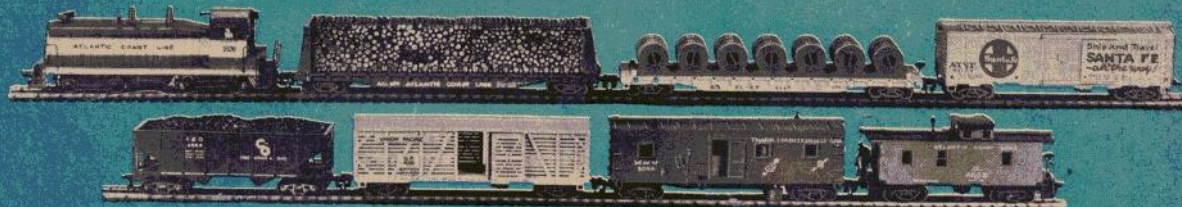
FAMILY FUN FOR H-O RAILROADERS

SET NO. 4

T-7017—T-7018

\$27.95

Complete with 8-wheel, gear-drive SW7 Switcher engine with rugged POWERFLO 5-pole motor. Operating track cleaner car, box car, stock car, coal hopper, pulpwood car, cable reel car, caboose, 14-piece oval of track, with railer and uncoupler. Available with Atlantic Coast Line (T-7017) or Southern Pacific (T-7018) Engine and Caboose.

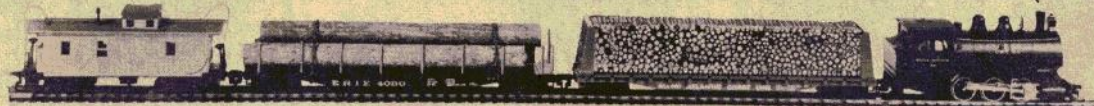


SET NO. 5

T-7102

\$29.95

Set features REAL smoke—REAL chug-a-chug sound, 6-wheel, gear-driven Union Pacific steam locomotive engine with rugged POWERFLO 5-pole motor. Pulpwood car with removable load, flat car with stakes and real logs. Two color caboose, 14-piece oval of track including railer, uncoupler, and terminal section. Bottle of smoke fuel. Engine and Caboose are Union Pacific (T-7102).



The following train items may be purchased individually:

LOCOMOTIVES

T-3510	A.T.S.F. (freight) Road Diesel	\$ 8.95
T-3513	N.H. Road Diesel	8.95
T-3516	Canadian Pacific Road Diesel	8.95
T-3552	N.H. Diesel Switcher	9.95
T-3553	S.F. Diesel Switcher	9.95
T-3600	U.P. Steam Locomotive	21.95
T-3650	P.R.R. Steam Yard Switcher	8.95

ROLLING STOCK

T-4001	Box Car — Great Northern	2.49
T-4004	Box Car — New Haven	2.49
T-4006	Box Car — Santa Fe	2.49
T-4007	Box Car — Union Pacific	2.49
T-4015	Refrig. Car — M.D.T.	2.49
T-4016	Refrig. Car — Swift	2.49
T-4017	Refrig. Car — Fruit Growers Express	2.49
T-4020	Cattle Car — Union Pacific	2.49
T-4021	Cattle Car — U.P. w/ramp & cattle	3.49
T-4024	Cattle Car — Mo. Pac. w/ramp & cattle	3.49
T-4031	Flat Car — Erie w/logs & stakes	2.49

T-4033	Flat Car — Soo w/logs & stakes	2.49
T-4034	Flat Car — Erie	1.98
T-4035	Flat Car — Soo	1.98
T-4040	Hopper Car — C & O w/coal	2.49
T-4042	Hopper Car — N & W w/coal	2.49
T-4044	Hopper Car — Burlington w/coal	2.49
T-4053	Gondola — C & N.W. w/load	2.49
T-4058	Gondola — Great Northern w/load	2.49
T-4059	Gondola — Western Maryland w/load	2.49
T-4064	Caboose — A.T. & S.F.	2.98
T-4066	Caboose — New Haven	2.98
T-4072	Caboose — Canadian Pacific	2.98
T-4111	Cement Hopper — S.P.	2.49
T-4112	Cement Hopper — Chicago & Eastern Ill.	2.49
T-4130	Pickle Car — Heinz	2.98
T-4140	Cable Reel Car — St. Louis & San Fran.	2.98
T-4150	Pulpwood Car — A.C.L.	2.98
T-4160	Bunk Car	2.98

OPERATING CARS

T-5000	Track Cleaner	4.98
--------	---------------	------

"I have been a modeler since boyhood—back in the days of scratch building. Now I own my own business and am too busy to scratch build. And so I have found Revell kits a source of many hours of enjoyment and relaxation. They also serve as therapy because of an injury received during the war; thus they not only allow me to keep my hand in, but improve my health. I particularly appreciate the great detail!"

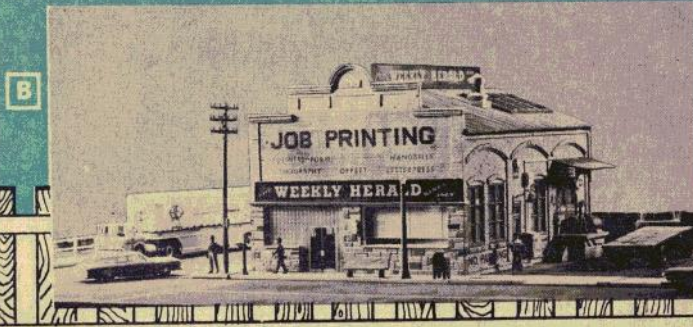
... Arthur Cohen, Jr.
(Jeweler)
Cape May, New Jersey

IT'S REAL BECAUSE IT'S REVELL

To make your model railroad world real... plan to use these easy-to-assemble "authentic architectural" H-O buildings. Designed for "night-life" interior lighting, with the Revell Lighting Kit T-6022.

These easy-to-put-together buildings have many uses, besides on your H-O layout. "Do-it-yourself" fans will enjoy discovering how to convert these fascinating miniature buildings into conversation piece decorations; book ends, lamp bases, shadow boxes, planters, and in many other ways.

H-O ACCESSORIES—TO MAKE A RAILROAD WORLD REAL



IDENTIFICATION CHART

A SUBURBAN HOUSE — Classic clapboard house, with outdoor barbecue, remodeled garage, patio bench, lamp and awnings. Molded in three colors. Includes curtains, drapes, clear window sheet and completely assembled H-O scale Chrysler car. Interior can be lighted using Revell Lighting Accessory kit. **T-9034 \$2.49**

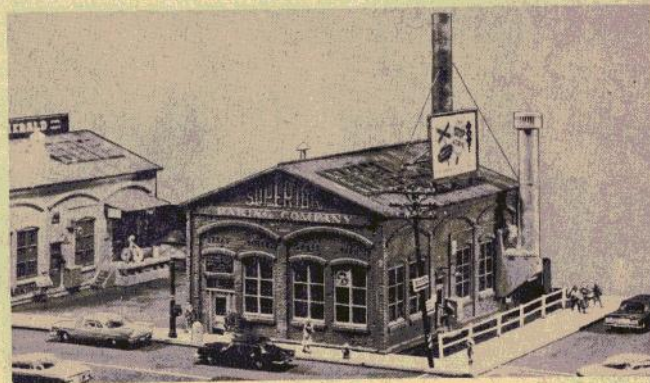
B WEEKLY HERALD — Small town newspaper and printing plant suitable for any H-O layout, large or small. Authentically scaled kit includes sidewalk, lamp post, police call box, bus bench, elaborate decals, special window sheet which includes detail of venetian blinds, window shades. Molded in three colors. Interior can be lighted using Revell Lighting Accessory kit. **T-9038 \$3.98**

C SUPERIOR BAKERY — So real looking that you can almost detect the aroma of fresh baked goods drifting through the air, this old time industrial brick structure is in exact H-O scale. Molded in three colors. Ideal for a factory grouping or street scene. Includes sidewalk, fire hydrant, trash bin, lamp post, mailbox, lights, billboards, elaborate decals. Printed clear window strip. Interior can be lighted using Revell Lighting Accessory kit. **T-9037 \$3.98**

D SUMMER STOCK THEATER — The curtain is about ready to go up in this authentic reproduction of a converted barn, with box office, ticket window, detailed stage, benches, lights. Molded in three colors. Movable benches and doors. Elaborate decals. Interior can be lighted using Revell Lighting Accessory kit. **T-9035 \$2.49**

E COUNTRY SCHOOLHOUSE — A typical rural two-room schoolhouse, elaborately detailed with belfry, school bell and ladder, detailed window sheet, water pump and bike rack. Playground equipment includes operating teeter-totter and tire swing. Molded in three colors. Interior can be lighted using Revell Lighting Accessory kit. **T-9036 \$2.98**

F LIGHTING ACCESSORY KIT — For complete layout realism... new lighting pack has everything to light interiors of H-O buildings. Complete with 18-volt bulb with soldered lead wire, metal clip, screw, all ready to attach to power supply. **T-6022 69¢**



IT'S REAL BECAUSE IT'S REVELL

HELPFUL H-O HINTS

LOCO MAINTENANCE—Lint and dust on the pick-up contacts of your locomotive causes erratic jerking. A small stiff brush, such as those used by women to apply eye make-up, is ideal for cleaning.

Locomotives, like automobiles, must receive lubrication periodically. Use light oil for axles, crankpins, and motor bearings. Worms and gears should be greased to minimize wear. Oil should be used sparingly. A toothpick dipped in oil will be perfect for hard-to-get spots. **CAUTION:** Do NOT oil the motor commutator where the brushes rub.

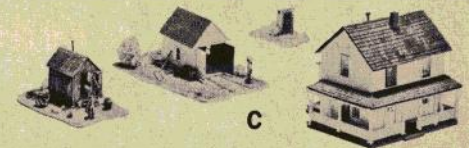
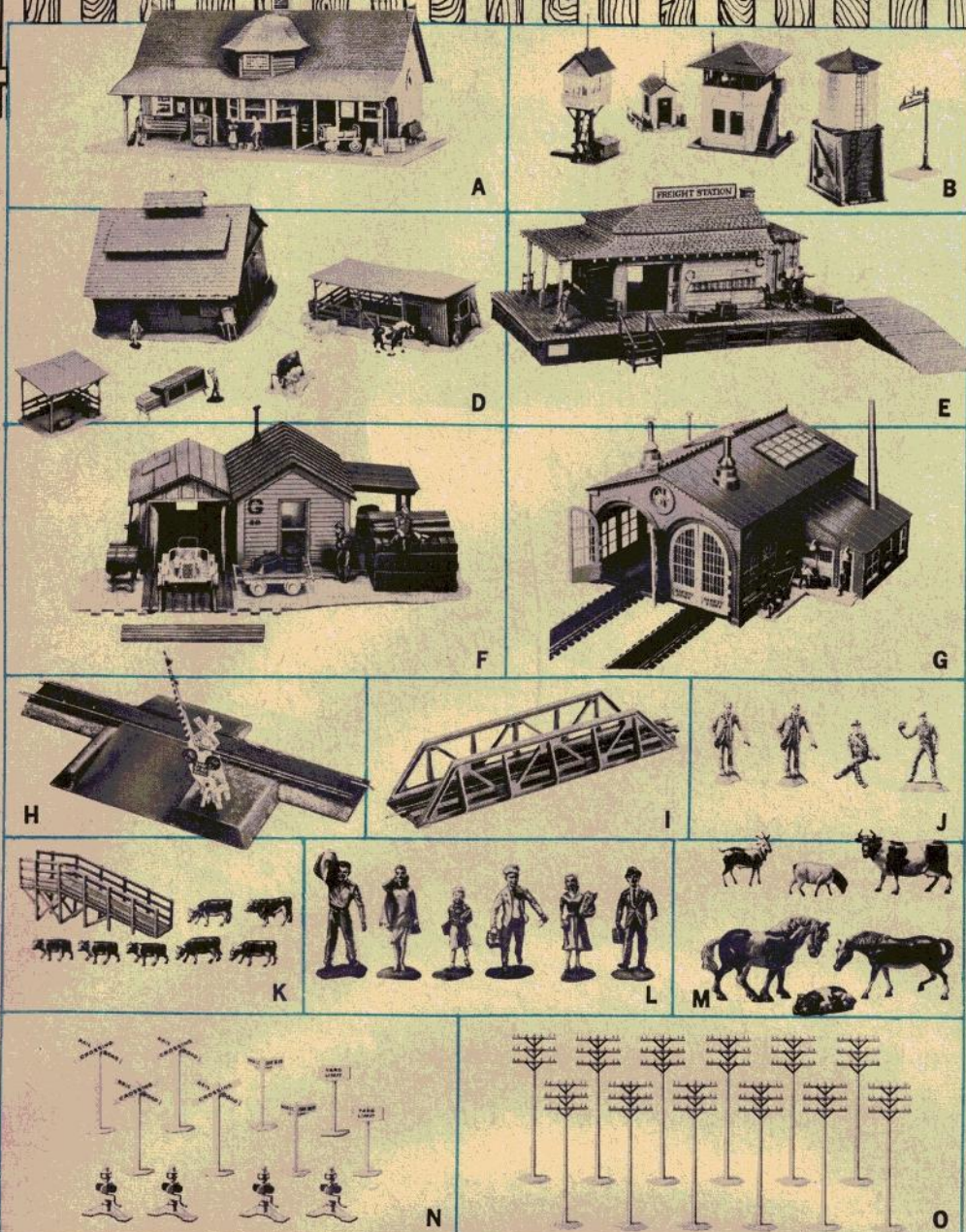
WEATHERING CARS—Dusting talcum powder on the roofs of your cars and locos will give them that well-worn and weathered look. Brush on with a downward motion on the sides.

SCENIC ROCKS—Broken cork fishing floats or stoppers make excellent miniature rocks when crumbled. Cement bits along streams and road bed. Use thinned paint to vary the colors.

BILLBOARDS—An abundance of signs and billboards can be cut from discarded match covers—most of which are H-O scale.

STONEMASONRY—Realistic stonework can be made from small scraps of linoleum. In setting, the edge of the piece should be bevelled and light gray paint rubbed between the pieces to simulate mortar.

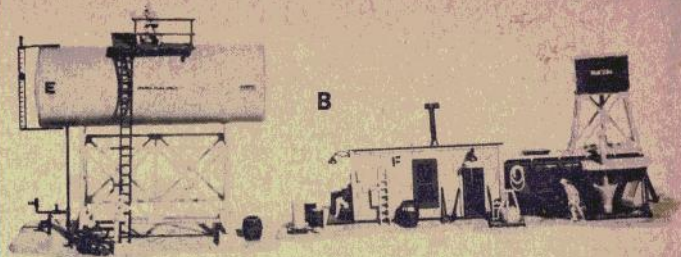
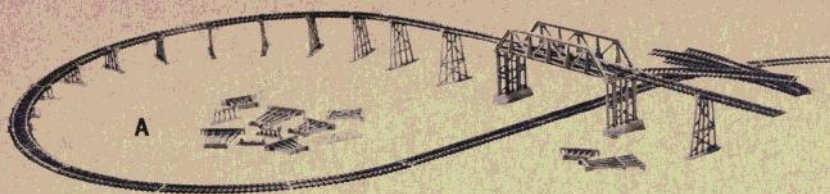
Keep your H-O equipment and accessories in good working condition, and enjoy—Twice the fun in half the space!!



IDENTIFICATION CHART

A	SMALL TOWN STATION —	
		T-9001 \$2.49
B	TRACK-SIDE BUILDING GROUP —	
		T-9002 \$2.49
C	FARMHOUSE BUILDING SET —	
		T-9003 \$2.49
D	BARN YARD SET —	
		T-9015 \$2.49
E	FREIGHT STATION —	
		T-9020 \$1.69
F	TRACKSIDE MAINTENANCE SHED —	
		T-9022 \$1.29
G	OPERATING H-O ENGINE HOUSE —	
		T-9028 \$3.98
H	OPERATING CROSSING GATE —	
		T-6016 \$5.95
I	RAILROAD BRIDGE —	
		T-6020 98¢
J	RAILROAD CREW AND HOBO —	
		T-6003 98¢
K	CATTLE SET —	
		T-6004 \$1.49
L	TOWNSPEOPLE —	
		T-6005 98¢
M	BARNYARD ANIMALS —	
		T-6006 98¢
N	SIGN AND SIGNAL SET —	
		T-6007 49¢
O	POWER POLES —	
		T-6008 49¢

IT'S REAL BECAUSE IT'S REVELL



The following H-O Scale Building Set items may be purchased individually as follows:

T-9004	Interlocking Tower	\$.98	T-9010	Garage	.89
T-9005	Water Tower & Tracksid Spout	.98	T-9011	Chicken Coop	.98
T-9006	Elevated Switchman Shanty	.89	T-9016	Barn	1.69
T-9008	Crossing Tender's Shack	.79	T-9017	Farmyard Buildings	1.29
T-9009	Farmhouse and Privy	1.29	T-9030	Sand & Pump House w/3 Figures	1.29
			T-9031	Fuel Tank w/2 Figures	.98

IDENTIFICATION CHART

A BRIDGE AND TRESTLE SET

T-6015 \$2.98

B SAND AND PUMP HOUSE WITH FUEL TANK

T-9029 \$1.98

C ENGINE CREW SHANTY

T-9033 \$1.49

D YARDMASTER'S OFFICE

T-9032 \$1.49

E POWER PACK (1 AMP)

T-6051 \$9.95

F OPERATING HOPPER SET

T-6100 \$6.95

G MANUAL THROWOUT SWITCHES

T-6073 left turnout \$2.95

T-6074 right turnout \$2.95

H REMOTE CONTROL SWITCHES

T-6075 left turnout \$4.95

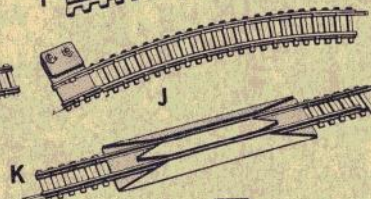
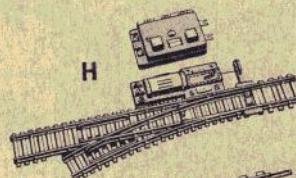
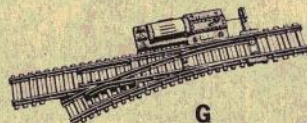
T-6076 right turnout \$4.95

I BUMPER TRACK

T-6077 49¢

J CONTACTOR

T-6078 75¢



K AUTOMATIC RE-RAILER

T-6000 60¢

L DUAL ACTION UNCOUPLER

T-6001 75¢

M STRAIGHT TRACK

T-6070 25¢ each or \$3.00 a dozen

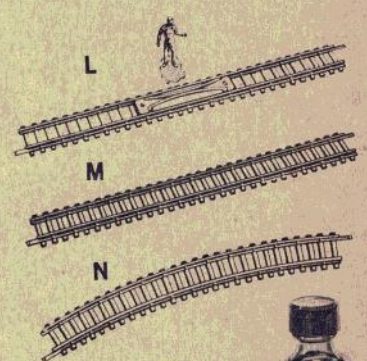
N CURVED TRACK

T-6071 15" radius section—
25¢ each or \$3.00 a dozen

T-6072 18" radius section—
25¢ each or \$3.00 a dozen

O SMOKE FUEL

T-6014 49¢



IT'S REAL BECAUSE IT'S REVELL